

# TABLE OF CONTENTS

## PCMMC

PART	DESCRIPTION	PAGE
1	INTRODUCTION	
1.1	PCMMC PACKAGE CONTENTS	
1.2	PCMMC INSTALLATION	
1.2.1	REQUIREMENTS	
1.2.2	PROCEDURES	
1.2.3	UNINSTALLATION	
2	PCMMC MENU	
2.1	START SCREEN	
2.2	START MENU	
2.2.1	FILE	
2.2.2	LINK	
2.2.3	WINDOWS	
2.2.4	HELP	
2.3	SHEET MENU	
3.	MMC ITEMS	
3.1	PCMMCS ASSOCIATED BY CATEGORY	
3.2	PCMMCS LISTED IN ALPHABETICAL ORDER	
3.3	PCMMCS LISTED IN NUMERICAL ORDER	

## **PARK1. INTRODUCTION**

### **1.1 PCMMC PACKAGE CONTENTS**

Setup File

User's Manual : Included in Setup File

### **1.2 PCMMC INSTALLATION**

#### **1.2.1 REQUIREMENTS**

ITEMS	SPECIFICATIONS
PC	Recommend Pentium PC or above
Main memory	Recommend 32 MB or above
Hard disk	40 MB minimum
Modem(not required)	1200~ 38400 baud
OS	Microsoft Windows 95 or above

Table 1.1 installation Requirements

#### **1.2.2 PROCEDURES**

1. Using Microsoft Windows 95 or above and run setup.exe
2. When the "Welcome" screen appears, run setup by clicking the "next" button.
3. Setup Type  
If you select "Normal", setup program copies common files of PCMMC including PCMMCwin.exe, all of DB file, etc. Otherwise, you copy the files you select.

Note: default is "normal".

Follow the installation prompts to complete the PCMMC installation.

It is suggested to use default prompts

#### **1.2.3 UNINSTALLATION**

If you wish to remove PCMMC from your PC execute uninstallation at add/remove programs in the control panel of your windows 95 or above operation system.

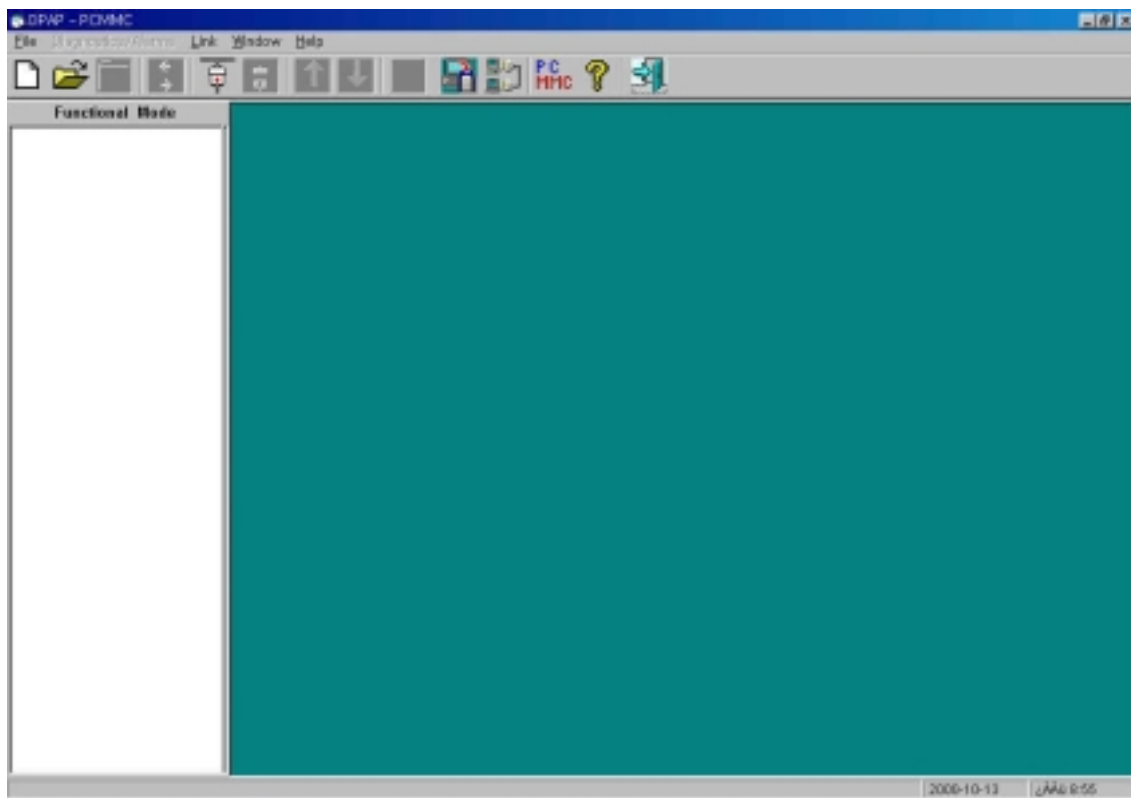
## PARK 2. PCMMC MENU

### 2.1 START SCREEN

If PCMMC was installed correctly, you are ready to run the PCMMC program. Double-click the “DPAP-PCMMC.exe” located in the “DPAP-PCMMC” folder, or you can make a shortcut “DPAP-PCMMC” in the start menu.



[Figure        ]



[Figure 2-1 Main screen]

Figure 2-1 shows the Main Screen.

You can click on icons from the toolbar to do functions you may frequently use during PCMMC and the Status Bar at the bottom of the Main Screen shows the operation status of each window. PCMMC Menu is designed as a tree view for opening a desired MMC.

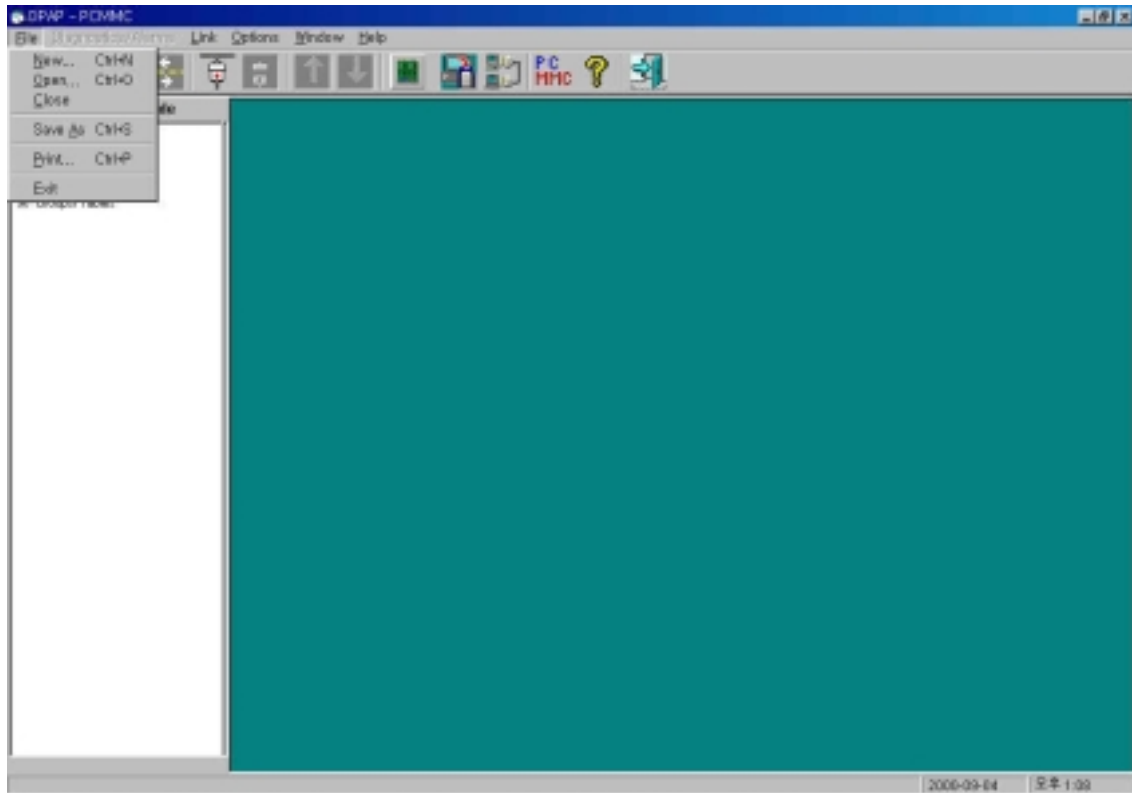
The current mode and the name of the database file are always displayed in the bottom left of the screen.

## 2.2 START MENU

### 2.2.1 FILE

The file menu consists of options such as New, Open, Close, Save As, Print and Exit as shown in Figure 2-2.


These menus can be used only on Off-Line mode except Exit menu.

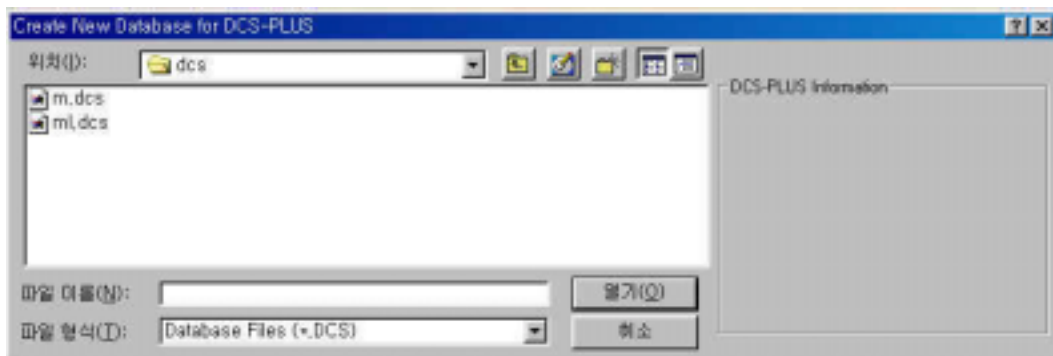


[Figure 2-2 File Menu Screen]

#### 1. New

This menu can only be selected if PCMMC is offline mode. When you select new file(NEW) from File Menu, a screen as in Figure 2-4 will be displayed. Enter a passcode to be assigned for the new database you are creating. A screen as Figure 2-3 will be displayed. You must re-enter the passcode for conformation. Select New file and click on the open button to create a new file. If you select an existing database file, the file will be overwritten, so you should be cautious not to name the new file the same as an existing file or the file will be overwritten.

NOTE:  A New file can also be created by clicking the (NEW) icon.



[Figure 2-3 Input New File Name]




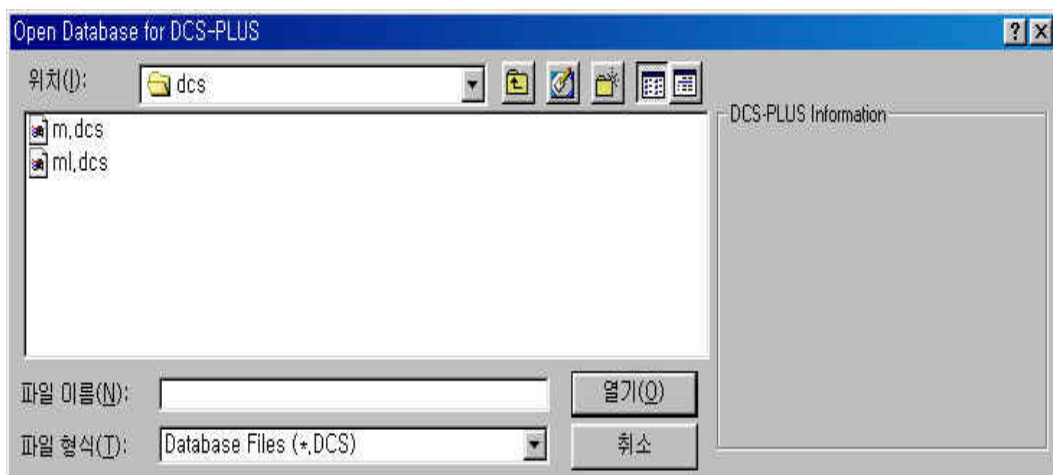
[Figure 2-4 Options for New File Passcode]

Input new file name in File Name Window, press Enter key or click on Open for PCMMC to create a new \*.DCS file

## 2. Open

This menu can only be selected in the offline mode. You can see the database version, country, and the last updated date of selected file. Type of double-click the file name you want to work on. The windows shown in Figure 2-5 appears to ask for the Passcode. An error message is displayed and the open menu is canceled if you fail to input a correct Passcode 3 times. If the file name is a new one, the program will ask you if you wish to create.

NOTE :  You can open a file (OPEN) by clicking on the icon




[Figure 2-6 File Open Screen]



[Figure 2-5 Confirmation for Passcode of Database file Connected (Offline)]

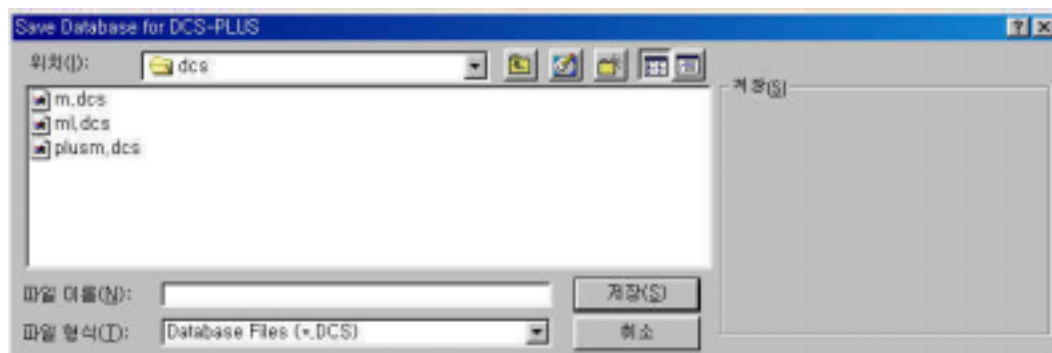
### 3. Close

You can use this menu only in the offline mode. This menu will close any active database in the program that may be currently opened.

NOTE:  You can close a file (CLOSE) by clicking on the icon.

### 4. Save As

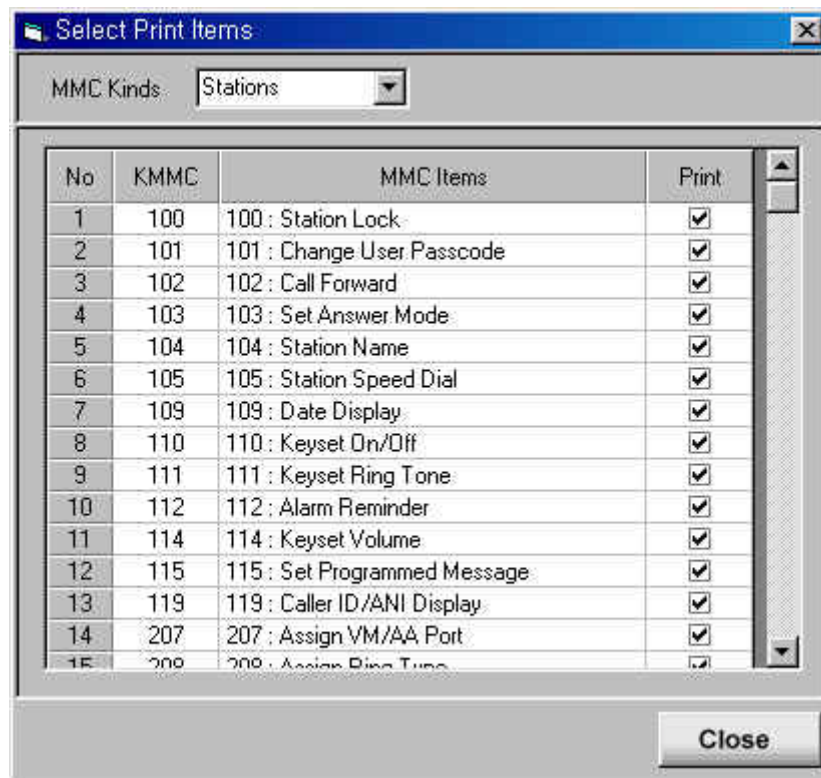
You can use this option only in the offline mode. When you select “Save as..” from file Menu, a windows such as Figure 2-7 will appear and create a name for the file you are currently working on. If you select an existing file name. You will overwrite the file the one you are saving.



[Figure 2-7 Screen to save with new name]

### 5. Print(Not Dfined)

This menu can only be used in the offline mode.



[Figure 2-8 Select Items to be printed]

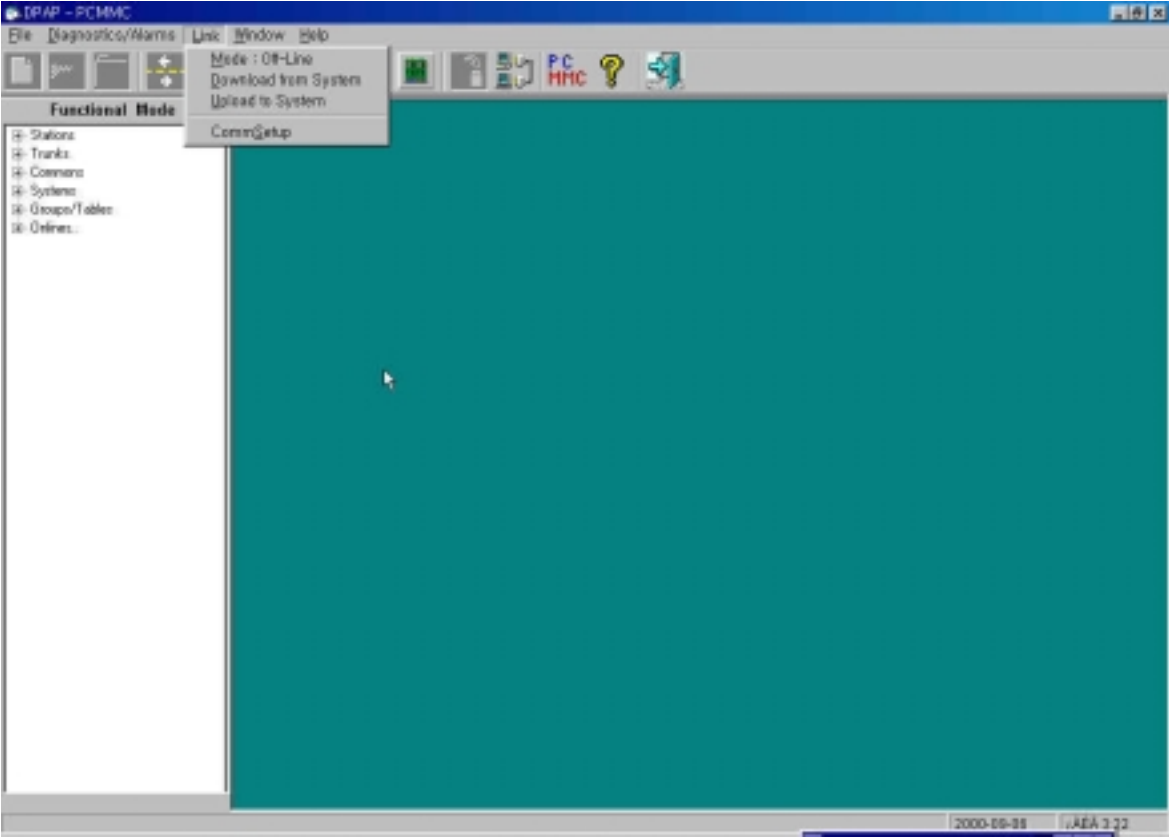
If you select “Select Print Items” from File Menu, a screen such as Figure 2-8 will appear. This screen lets you select which items you wish to print. Select “Print” for items to print by clicking on the empty boxes that are located under the print field. If you want to select all item, double click the “Print” which is the field name on the top of check box.

## 6. Exit

Selecting Exit from File menu will close program. If there is any unsaved data in any open file you may be currently working on, PCMMC will ask if you wish to save any previous changes made before closing.



2.2.2 Link



[Figure 2-21 Link Screen]

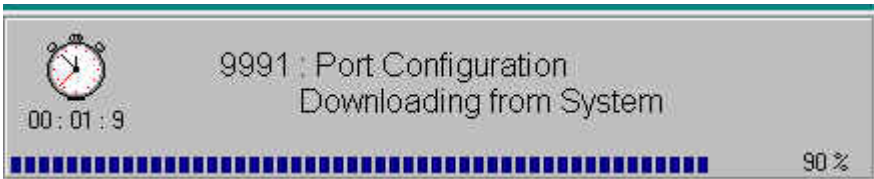
1. Mode

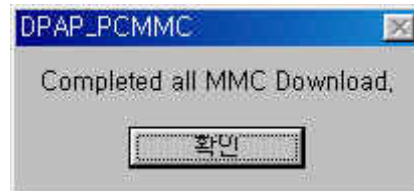
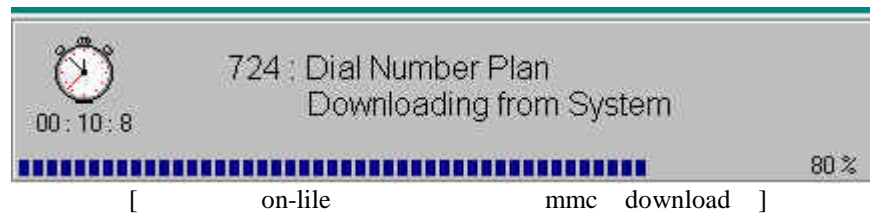
1.1 On-Line

The Online link Mode means that PCMMC will attempt to connect to the DCS-PLUS system upon launching. The online passcode is prompted when communications are established between the PC and the DCS-PLUS system.



[Figure 2-22 Confirmation for Technical Passcode of DCS-PLUS connected (online)]





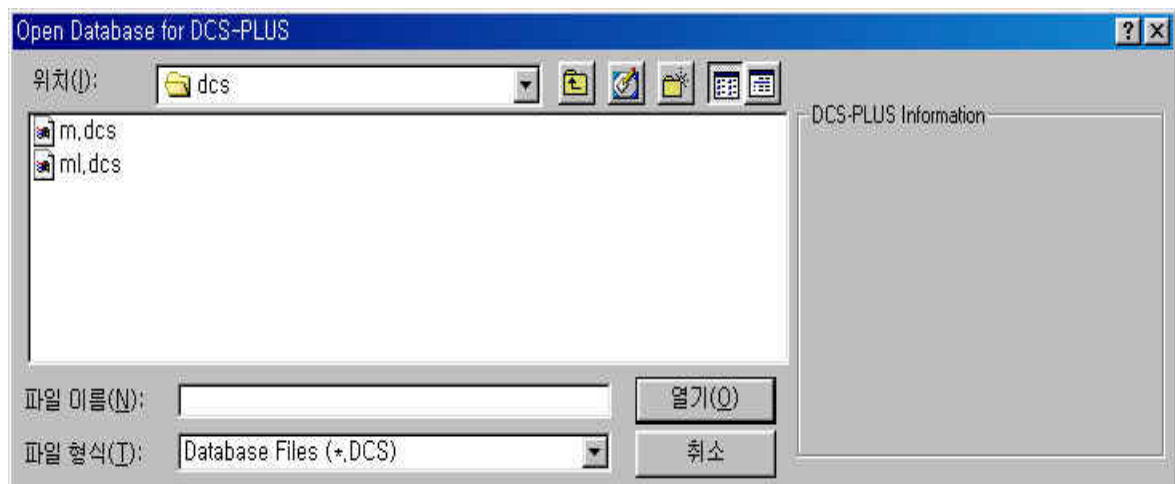
[Figure 2-23 MMC download ]

Input the technical passcode for DCS-PLUS system and if the correct passcode is inserted, then PCMMC will start to load necessary data such as “Card Configuration” and “Dial Number Plan”.

NOTE: PCMMC will automatically exit after an incorrect passcode has been entered 3 times.

## 1.2. Off-Line

In this dialog box, a database file (\*.dcs) must be selected. If there are no databases to be selected, then one must be created. A single click on any one of these (\*.dcs) files displays the database version, country, and the last updated dated of selected database file under the column labeled dcs information.



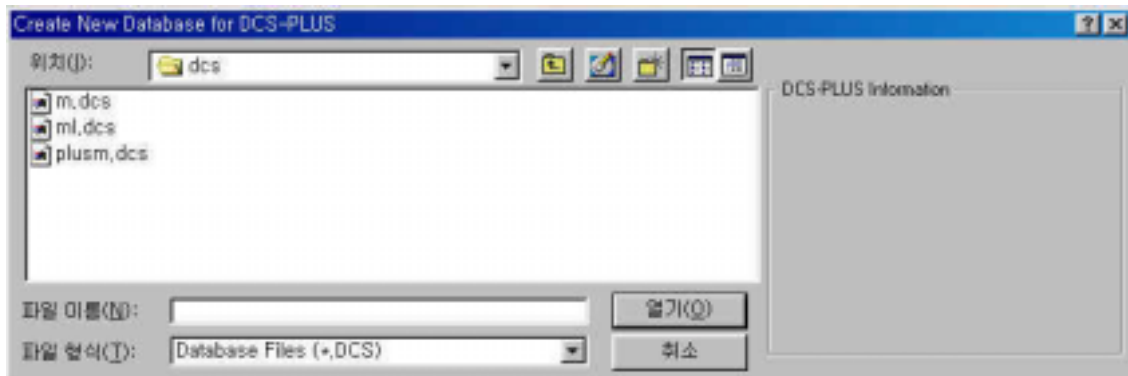
[Figure 2-24 File Selection Screen]

If you select a database or create a new one, a screen such as Figure 2-24 will appear, and ask for the technical passcode(offline) as it did in the online mode. If the passcode is entered correctly, the main screen will appear. If an incorrect technical passcode is entered 3 times, the program will close.

## 2. Download from System

This function downloads the DCS-PLUS’s database to your PC. First you must select a file that will be used for downloading , see Figure 2-25. If PCMMC is offline, then you can

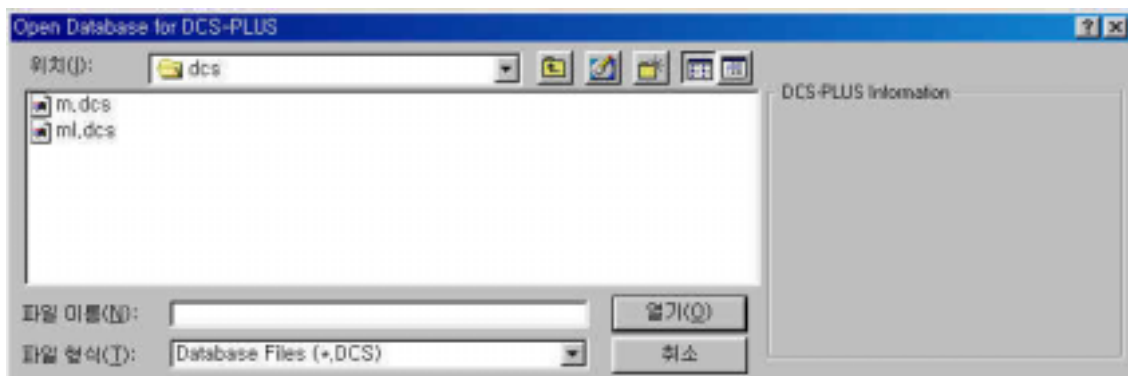
select a DB you may have currently open. Any MMC may be selected to download from Select Load Items. Configuration Card and Number Plan will first be uploaded since Configuration Card and Number Plan have an effect on all of the MMCs, regardless of which MMCs you may have selected.



[Figure 2-25 Download Screen]

### 3. Upload To System

This option is used to upload a database located on your PC to the DCS-PLUS System. You must first select which file you wish to use for uploading, see Figure2-26. If PCMMC is offline, then you can select a database you may have currently open. Any MMC may be selected to upload from Select Load Items for the load option in the toolbar.



[Figure 2-26 Upload Screen]

It is important that the card configuration on the database located on PC matched the card configuration on the DCS-PLUS. Check the configurations of card and port before attempting to upload database. Configuration Card and number plan will first be uploaded since Configuration Card and Number Plan have an effect on all of other MMCs, regardless which MMCs you may have selected. PCMMC will display an error message window and stop uploading or downloading if the operation is unsuccessful. PCMMC will then ask if you wish to continue to download or upload the item on the list.

### 4. CommSetup

This window is used to set the options for communication between PC and DCS-PLUS.

ITEM		VALUE
COMM.	Kind	LAN
	Baud Rate	1
	Data Bits	1
	Stop Bits	0
	Parity Bit	NONE
	COM Port	
MODEM	Dial Try Count	5
	Dial Delay Time	50
MESSAGE	Try Count	5
	Wait Time	5
	Resp. Wait Time	50
LAN	IP Address	168.219.75.95
	Port	5000

OK Close

[Figure 2-27 Communication Setup Screen]

### Communications

Communication field is where each of these parameters are set – serial port, baud rate, data bit, stop bit and parity. These options can be changed only when link kind 1 is set for local.

### Timers for Modem

When connecting to DCS-PLUS via modem and establishing connection fails, then the re-dial time and re-dial count may need to be changed from their default values.

Dial Try Count : Default value is 5 counts

Available range is from 1 to 9.

Dial Delay time : Default value is 50 seconds

Available range is from 1 to 99 seconds

### Time for a Message

When PCMMC attempts to establish connection with DCS-PLUS via modem and there is no response from the DCS-PLUS to establish a handshake, then the re-request counts and re-request timers may need to be changed from their default value. The waiting timer for response when system doesn't send response may also need to be modified from its default value as well.

Msg Try Count : Default value is 5 counts

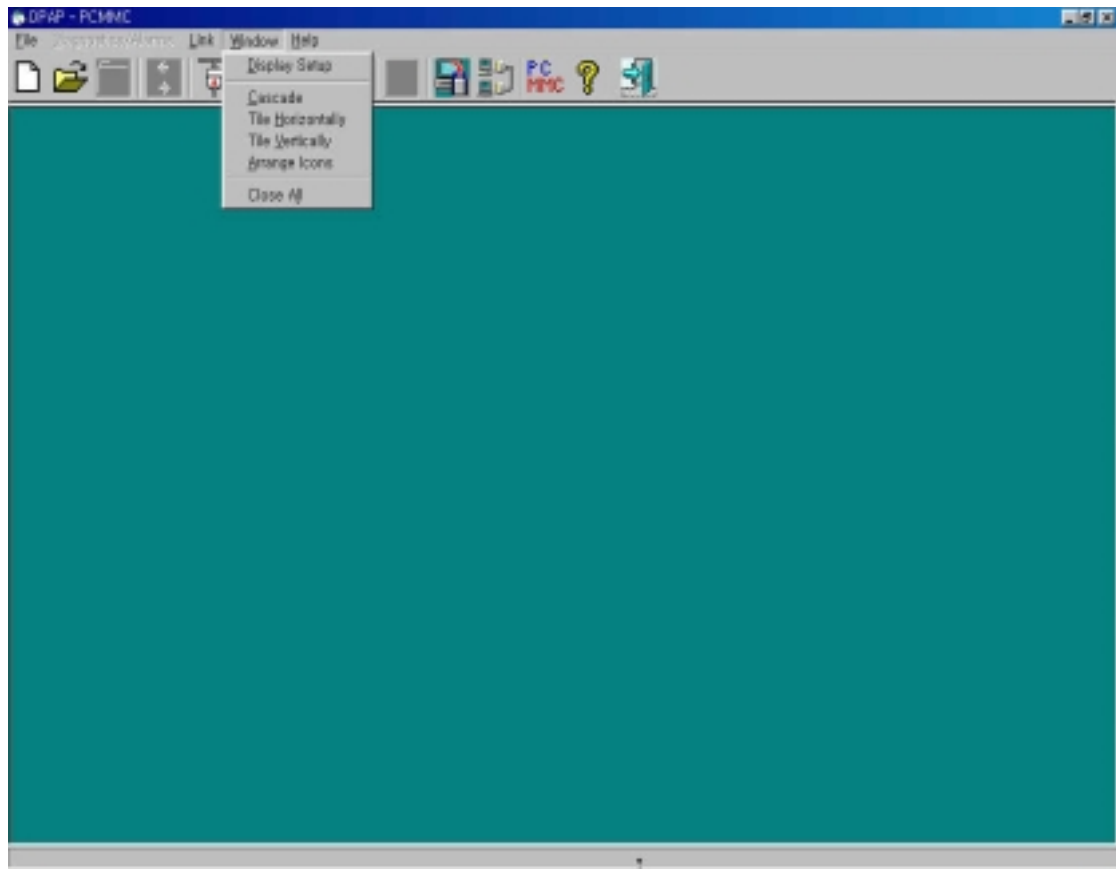
Available range is from 1 to 9

Msg Wait Time : Default value is 50 seconds  
Available range is from 1 to 99 seconds

Response Msg Wait : Default value is 50 seconds.  
Available range is from 1 to 99 seconds

LAN Destination  
IP Address  
Port : Application Port Number

## 2.2.4 Windows

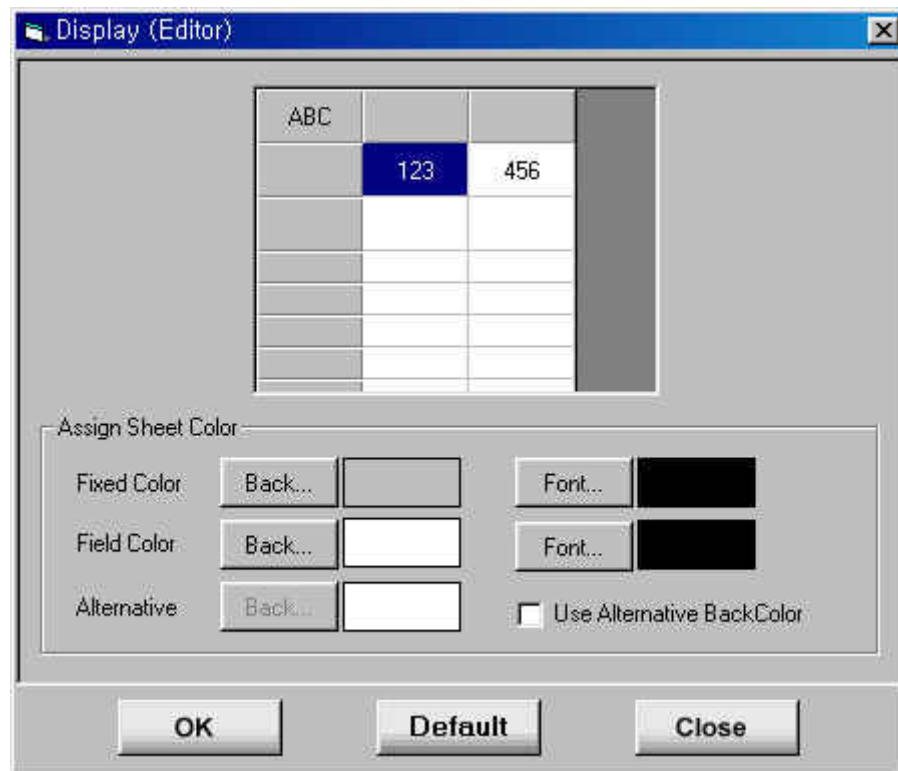


[Figure 2-28 Windows Screen]

As shown in Figure 2-28 the window menu lists all currently open windows.

Here you can click which to switch to. A check mark appears on any window that you are currently working on.

### 1. Display Setup

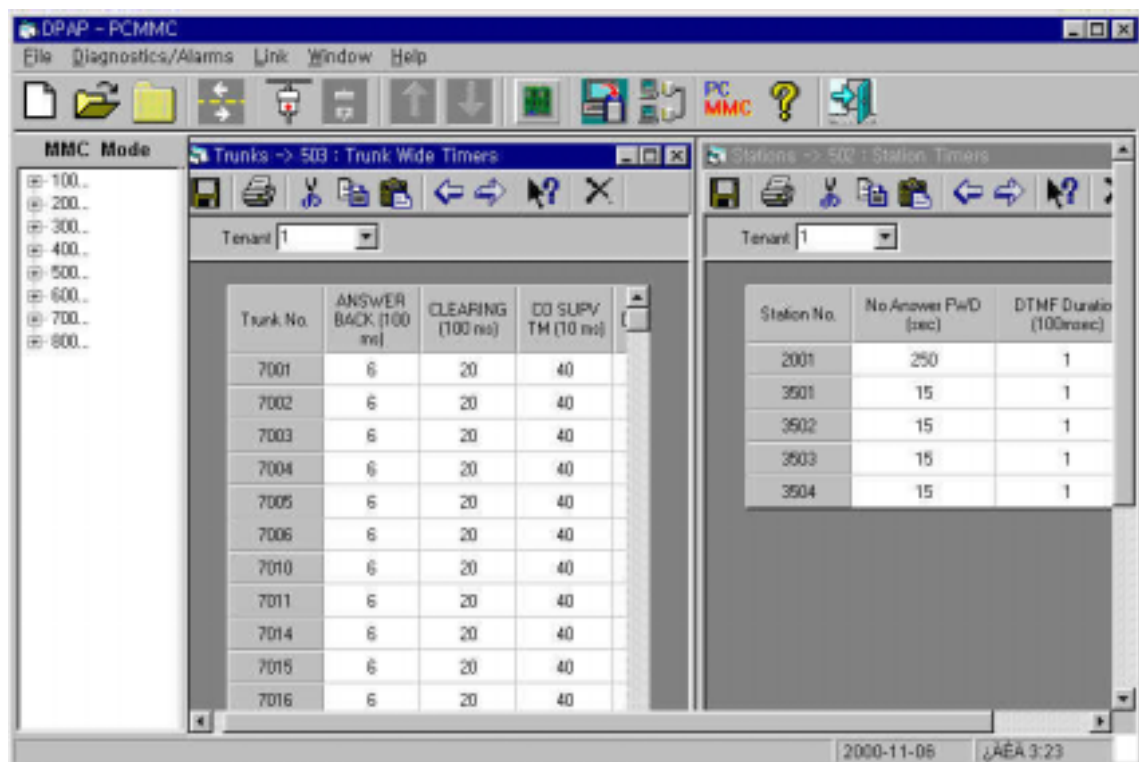


[Figure 2-29 Display(Editor) Screen]

This window is used to set the color of the grid tools. Forecolor, backcolor, and alternative color for making more distinction columns can be set in this window.

## 2. Cascade

Arrages Windows on top of one another



### 3. The Horizontally

Arranges Windows Horizontally

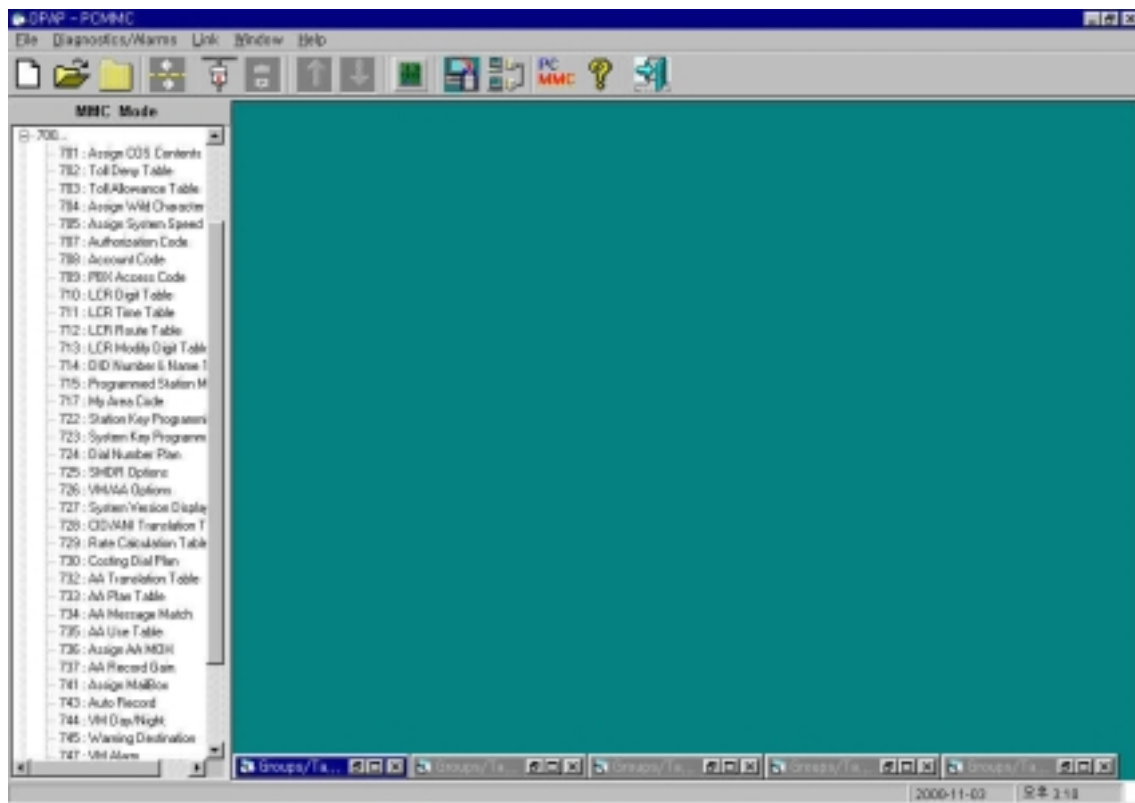
### 4. The Vertically

Arranges Windows Vertically.

### 5. Arranges Icon.

Arranges as icon.



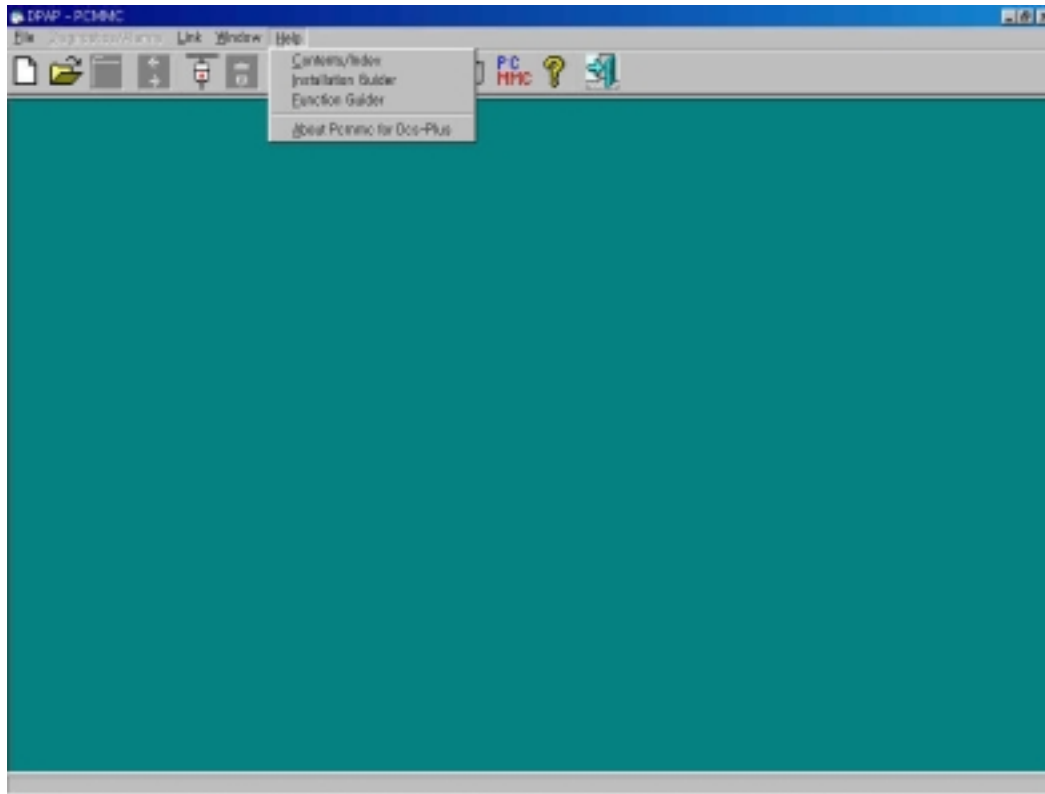


## 6. Close All

Ask user to save the data and close all open Windows

### 2.2.5 Help

Pressing F1 will bring up the help menu. The help menu provides help topics and tips to help you accomplish your tasks.



[Figure 2-30 Help Screen]

#### 1. Contents & Index

Under the Content tab PCMMC lists its tools and functions by their subject. Under the index tab, you can type keywords or MMC numbers to find corresponding function in index.

#### 2. Installation Guide

This function is a helpful tool for adding or removing cards in DCS-PLUS.

#### 3. Function Guide

#### 4. About Pcmmc for DCS-PLUS

Display the version and date of this PCMMC program, copyright, legal, and licensing notices. When About PCMMC is selected, a window will appear as shown in Figure 2-34 appears.



## 2.3

### 1. Change Between Functional and MMC

## 2.4 Sheet Menu

### 1. Save(offline) or Upload(online)



- Save(offline)
- Upload(online)

Once you are ready to upload a database to the DCS-PLUS, PCMMC will ask which database you wish to upload. This option can only be selected once you are connected to the DCS-PLUS.

After an upload of the entire system database it is recommended to reset the system, via PCMMC or via KMMC. This is to insure that the memory information aligns properly as the state of the memory could have changed due to stations or trunks trying to complete calls during the upload process.

### 2. Print



If you click on this icon, only the currently active MMC will be printed, unlike print from the File Menu

### 3. Copy



If you click on this icon,

### 4. Paste



This option can be used to paste data that you have cut or copied.

If the field type of data that was placed on the clipboard is different data, then it will not paste.

### 5. Previous MMC



Move to previous MMC

### 6. Next MMC



Move to Next MMC

### 7. Help



## PART3. MMC ITEMS

### 3.1 PCMMC ASSOCIATED BY CATEGORY

#### 1. STATION LEVEL PROGRAMS

MMC Name	No	MMC Name	No
Station Lock	100	Pickup Groups	302
Change User Passcode	101	Assign Boss/Secr	303
Call Forward	102	Assign Extension / Trunk Use	304
Set Answer Mode	103	Assign Forced Code	305
Station Name	104	Hot Line	306
Station Speed Dial	105	Assign BGM Source	308
Date Display	109	Assign Station MOH	309
Keyset On/Off	110	LCR Class of Service	310
Keyset Ring Tone	111	Allow CID/ANI	312
Alarm Reminder	112	Station To Station Use	314
Keyset Volume	114	Preset FWD No Answer	316
Set Programmed Message	115	Time/Cost Display Option	317
Caller ID/ANI Display	119	Keyset Type	318
Assign VM/AA Port	207	Calling Party Number	321
Assign Ring Type	208	Station Timers	502
Assign AOM	209	Assign Review Block	608
Station Pair	217	Assign Call Log Block	609
ISDN Service Type	223	Station Key Programming	722
Customer On/Off Per Station	300	Assign Mailbox	741
Assign Station COS	301	Auto Record	743

#### 2. TRUNK LEVEL PROGRAMS

MMC Name	No	MMC Name	No
Customer On / Off Per Trunk	400	Trunk Gain Control	418
C.O / PBX Line	401	Distinctive Ring	419
Trunk Dial Type	402	ANI / DNIS Option	420
Trunk Toll Class	403	Trunk COS	421
Trunk Name	404	Cost Rate	422
Trunk Number	405	BRI Option(T0)	425
Trunk Ring Assignment	406	BRI SPID/DN	426
Assign Trunk MOH	408	S/T Mode	427
Assign DISA Trunk	410	BRI S0 Mapping	428
Assign T1 Signal Type	411	PRI Option	430
Assign Trunk Signal	412	Trunk Wide Timers	503
Assign Caller ID / ANI Trunks	414	T1 Parameters	808
Report Trunk Abandon Data	415	Assign Q-SIG Mode	821
Assign E&M / DID Ringdown	416	BRI Option(S0)	4251

#### 3. COMMON LEVEL PROGRAMS

MMC Name	No	MMC Name	No
Common Bell Control	204	Traffic Report Printout	219
Assign Loud Bell	205	Ethernet Parameters	830
Door Ring Assignment	211	VoIP Parameters	831

#### 4. SYSTEM LEVEL PROGRAMS

MMC Name	No	MMC Name	No
Change Customer Passcode	201	Assign AA MOH	736
Change Feature Passcode	202	AA Rec Gain	737

Assign UA Device	203	VM Day/Night	744
Barge-In Type	206	Warning Destination	745
Customer On / Off Tenant	210	VM Alarm	747
DISA Alarm Ringing Station	214	Change Technical Passcode	801
System Wide Counters	500	Customer Access MMC Number	802
System Wide Timers	501	Assign Tenant Group	803
Pulse Make / Break Ratio	504	System I/O Parameter	804
Assign Date and Time	505	TX Level & Gain	805
SLI Ring Cadence	510	Volume Control	807
SLI Msg Waiting Lamp Cadence	511	Set Country	812
Holiday Assignment	512	Conference Gain	816
Assign Speed Block	606	Assign System Link ID	820
PBX Access Code	709	Assign Network Cos	823
My Area Code	717	Network Dial Digit	824
System Key Program	723	System Options	855
Dial Number Plan	724	Tech Programming Logs	856
SMDR Options	725	Special Code	7091
VM / AA Options	726	Emergency Dial	7092
System Version	727	Config Card	

#### 5. GROUPS LEVEL PROGRAMS

<b>MMC Name</b>	<b>No</b>	<b>MMC Name</b>	<b>No</b>
Tone Cadence	506	LCR Time Table	711
Assign Ring Plan Time	507	LCR Route Table	712
Assign Operator Group	600	LCR Modify Digit Table	713
Assign Station Group	601	DID Number & Name Translation	714
Assign Trunk Group	603	Programmed Station Message	715
Assign Station To Page Zone	604	CID / ANI Translation Table	728
Assign External Page Zone	605	Rate Calculation Table	729
UCD Group	607	Costing Dial Plan	730
Assign COS Contents	701	AA Translation Table	732
Toll Deny Table	702	AA Plan Program	733
Toll Allowance Table	703	AA Message Match	734
Assign Wild Charater	704	AA Use Table	735
Assign System Speed Dial	705	Assign VM MOH	748
Authorization Code	707	VM In/Out	749
Account Code	708	UCD View Service	860
LCR Digit Table	710		

#### 6. ONLINE LEVEL PROGRAMS

<b>MMC Name</b>	<b>No</b>	<b>MMC Name</b>	<b>No</b>
Forced Reset System	407	VM Card Restart	740
BRI/PRI Card Restart	424	VM Halt	746
Connection Status	432	Halt Processing	810
AA Ram Clear	731	Reset System	811

### 3.2 PCMMCS LOSTED IN ALPHABETICAL ORDER

MMC Name	No	MMC Name	No
AA Message Match	734	DISA Alarm Ringing Station	214
AA Plan Program	733	Distinctive Ring	419
AA Rec Gain	737	Door Ring Assignment	211
AA Translation Table	732	Emergency Dial	7092
AA Use Table	735	Ethernet Parameters	830
Account Code	708	Holiday Assignment	512
Alarm Reminder	112	Hot Line	306
Allow CID/ANI	312	ISDN Service Type	223
ANI / DNIS Option	420	Keypad On/Off	110
Assign AA MOH	736	Keypad Ring Tone	111
Assign AOM	209	Keypad Type	318
Assign BGM Source	308	Keypad Volume	114
Assign Boss/Secr	303	LCR Class of Service	310
Assign Call Log Block	609	LCR Digit Table	710
Assign Caller ID / ANI Trunks	414	LCR Modify Digit Table	713
Assign COS Contents	701	LCR Route Table	712
Assign Date and Time	505	LCR Time Table	711
Assign DISA Trunk	410	My Area Code	717
Assign E&M / DID Ringdown	416	Network Dial Digit	824
Assign Extension / Trunk Use	304	PBX Access Code	709
Assign External Page Zone	605	Pickup Groups	302
Assign Forced Code	305	Preset FWD No Answer	316
Assign Loud Bell	205	PRI Option	430
Assign Mailbox	741	Programmed Station Message	715
Assign Network Cos	823	Pulse Make / Break Ratio	504
Assign Operator Group	600	Rate Calculation Table	729
Assign Q-SIG Mode	821		
Assign Review Block	608	Report Trunk Abandon Data	415
Assign Ring Plan Time	507	S/T Mode	427
Assign Ring Type	208	Set Answer Mode	103
Assign Speed Block	606	Set Country	812
Assign Station COS	301	Set Programmed Message	115
Assign Station Group	601	SLI Msg Waiting Lamp Cadence	511
Assign Station MOH	309	SLI Ring Cadence	510
Assign Station To Page Zone	604	SMDR Options	725
Assign System Link ID	820	Special Code	7091
Assign System Speed Dial	705	Station Key Programming	722
Assign T1 Signal Type	411	Station Lock	100
Assign Tenant Group	803	Station Name	104
Assign Trunk Group	603	Station Pair	217
Assign Trunk MOH	408	Station Speed Dial	105
Assign Trunk Signal	412	Station Timers	502
Assign UA Device	203	Station To Station Use	314
Assign VM MOH	748	System I/O Parameter	804
Assign VM/AA Port	207	System Key Program	723
Assign Wild Charater	704	System Options	855
Authorization Code	707	System Version	727
Auto Record	743	System Wide Counters	500
Barge-In Type	206	System Wide Timers	501
BRI Option(S0)	4251	T1 Parameters	808
BRI Option(T0)	425	Tech Programming Logs	856

BRI S0 Mapping	428	Time/Cost Display Option	317
BRI SPID/DN	426	Toll Allowance Table	703
C.O / PBX Line	401	Toll Deny Table	702
Call Forward	102	Tone Cadence	506
Caller ID/ANI Display	119	Traffic Report Printout	219
Calling Party Number	321	Trunk COS	421
Change Customer Passcode	201	Trunk Dial Type	402
Change Feature Passcode	202	Trunk Gain Control	418
Change Technical Passcode	801	Trunk Name	404
Change User Passcode	101	Trunk Number	405
CID / ANI Translation Table	728	Trunk Ring Assignment	406
Common Bell Control	204	Trunk Toll Class	403
Conference Gain	816	Trunk Wide Timers	503
Config Card		TX Level & Gain	805
Cost Rate	422	UCD Group	607
Costing Dial Plan	730	UCD View Service	860
Customer Access MMC Number	802	VM / AA Options	726
Customer On / Off Per Trunk	400	VM Alarm	747
Customer On / Off Tenant	210	VM Day/Night	744
Customer On/Off Per Station	300	VM In/Out	749
Date Display	109	VoIP Parameters	831
Dial Number Plan	724	Volume Control	807
DID Number & Name Translation	714	Warning Destination	745

### 3.3 PCMMCS LISTED IN NUMERICAL ORDER

MMC Name	No	MMC Name	No
Station Lock	100	Pulse Make / Break Ratio	504
Change User Passcode	101	Assign Date and Time	505
Call Forward	102	Tone Cadence	506
Set Answer Mode	103	Assign Ring Plan Time	507
Station Name	104	SLI Ring Cadence	510
Station Speed Dial	105	SLI Msg Waiting Lamp Cadence	511
Date Display	109	Holiday Assignment	512
Keyset On/Off	110	Assign Operator Group	600
Keyset Ring Tone	111	Assign Station Group	601
Alarm Reminder	112	Assign Trunk Group	603
Keyset Volume	114	Assign Station To Page Zone	604
Set Programmed Message	115	Assign External Page Zone	605
Caller ID/ANI Display	119	Assign Speed Block	606
Change Customer Passcode	201	UCD Group	607
Change Feature Passcode	202	Assign Review Block	608
Assign UA Device	203	Assign Call Log Block	609
Common Bell Control	204	Assign COS Contents	701
Assign Loud Bell	205	Toll Deny Table	702
Barge-In Type	206	Toll Allowance Table	703
Assign VM/AA Port	207	Assign Wild Charater	704
Assign Ring Type	208	Assign System Speed Dial	705
Assign AOM	209	Authorization Code	707
Customer On / Off Tenant	210	Account Code	708
Door Ring Assignment	211	PBX Access Code	709
DISA Alarm Ringing Station	214	Special Code	7091
Station Pair	217	Emergency Dial	7092
		LCR Digit Table	710



Traffic Report Printout	219	LCR Time Table	711
ISDN Service Type	223	LCR Route Table	712
Customer On/Off Per Station	300	LCR Modify Digit Table	713
Assign Station COS	301	DID Number & Name Translation	714
Pickup Groups	302	Programmed Station Message	715
Assign Boss/Secr	303	My Area Code	717
Assign Extension / Trunk Use	304	Station Key Programming	722
Assign Forced Code	305	System Key Program	723
Hot Line	306	Dial Number Plan	724
Assign BGM Source	308	SMDR Options	725
Assign Station MOH	309	VM / AA Options	726
LCR Class of Service	310	System Version	727
Allow CID/ANI	312	CID / ANI Translation Table	728
Station To Station Use	314	Rate Calculation Table	729
Preset FWD No Answer	316	Costing Dial Plan	730
Time/Cost Display Option	317	AA Translation Table	732
Keyset Type	318	AA Plan Program	733
Calling Party Number	321	AA Message Match	734
Customer On / Off Per Trunk	400	AA Use Table	735
C.O / PBX Line	401	Assign AA MOH	736
Trunk Dial Type	402	AA Rec Gain	737
Trunk Toll Class	403	Assign Mailbox	741
Trunk Name	404	Auto Record	743
Trunk Number	405	VM Day/Night	744
Trunk Ring Assignment	406	Warning Destination	745
Assign Trunk MOH	408	VM Alarm	747
Assign DISA Trunk	410	Assign VM MOH	748
Assign T1 Signal Type	411	VM In/Out	749
Assign Trunk Signal	412	Change Technical Passcode	801
Assign Caller ID / ANI Trunks	414	Customer Access MMC Number	802
Report Trunk Abandon Data	415	Assign Tenant Group	803
Assign E&M / DID Ringdown	416	System I/O Parameter	804
Trunk Gain Control	418	TX Level & Gain	805
Distinctive Ring	419	Volume Control	807
ANI / DNIS Option	420	T1 Parameters	808
Trunk COS	421	Set Country	812
Cost Rate	422	Conference Gain	816
BRI Option(T0)	425	Assign System Link ID	820
BRI Option(S0)	4251	Assign Q-SIG Mode	821
BRI SPID/DN	426	Assign Network Cos	823
S/T Mode	427	Network Dial Digit	824
BRI S0 Mapping	428	Ethernet Parameters	830
PRI Option	430	VoIP Parameters	831
System Wide Counters	500	System Options	855
System Wide Timers	501	Tech Programming Logs	856
Station Timers	502	UCD View Service	860
Trunk Wide Timers	503	Config Card	